

*The technological innovation applied to a classic telephone service  
... and much more!*



*High sound power, acoustic and visual signaling, adjustable*

## Sip Call Repeater with customizable ringtones and Announcer

The AD639SR IP-SIP Call repeater, in an IP56 container, is part of a series of TEMA loudspeakers to be connected in a standard LAN network and is particularly suitable as a SIP repeater for incoming telephone calls in a group of telephones. The sound power of the device is adjustable or automatic and is activated when an incoming call is received and emits pre-recorded audio files in its internal memory according to need. Included are several ringtone and alert files that are easily replaceable via web browser.

**AD639SR manages 8 accounts with different ringtones according to the group of the called user** and can be equipped with multicolor LED or Xenon flash light signals to add an optical signal to the acoustic sounds.

AD639SR is equipped with an external command input for special safety functions and integrates 2 programmable relays to activate other external devices.

The power supply can be supplied on the same network cable from a PoE switch, or from an external 230Vac/24Vdc power supply in the Tema catalog to obtain greater sound power.

AD639SR directly drives a second external passive loudspeaker to further increase the sound power delivered, direct the sound or repeat it in other areas.

### Integration with VoIP SIP phone systems

AD639SR integrates with VoIP telephony systems with SIP protocol and registers as a normal VoIP phone. **The system has been tested and is compatible with the most popular PBX brands on the market.**



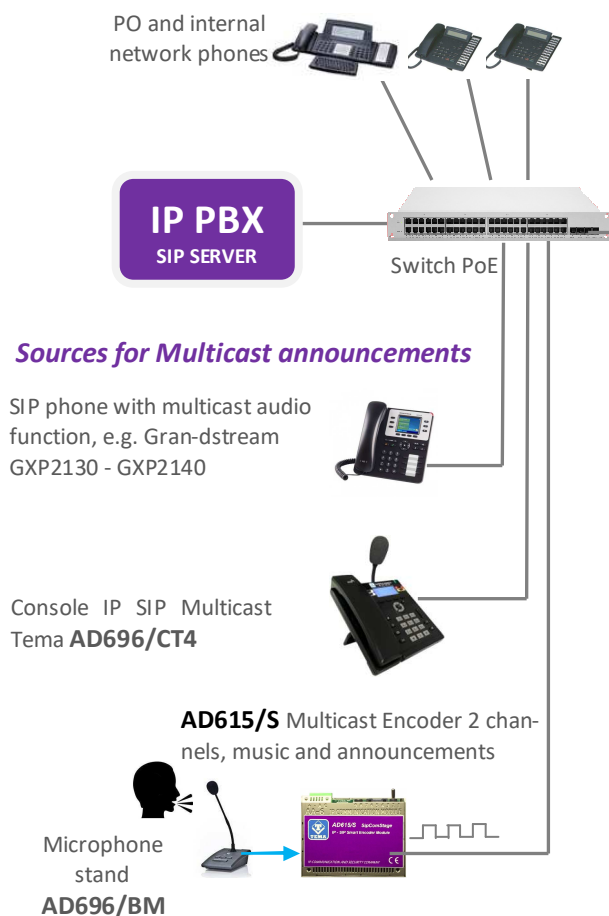
### Applications, Target

- ♦ Offices, Warehouses, noisy environments
- ♦ Hospitals, schools, shops, shopping centres
- ♦ Alarm and warning systems, video surveillance

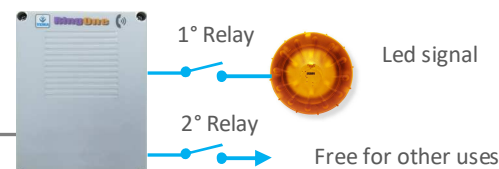
### Performances

- 8 accounts with different sounds according to the called user
- 8 ringtones supplied, replaceable and customizable
- Optical signaling with Flash and multicolour LED
- 3 Multicast channels for audio reception and announcements
- Auto volume based on ambient noise
- Automatic announcements at set times
- 1 external input for warning and safety functions
- 1 Multicast outgoing channel to repeat the ringtone

## • PoE power supply, SIP IP Repeater and Audio Message Announcer



### AD639SR



### Sources for Multicast announcements

SIP phone with multicast audio function, e.g. Grandstream GXP2130 - GXP2140

Console IP SIP Multicast Tema AD696/CT4

AD615/S Multicast Encoder 2 channels, music and announcements

Microphone stand AD696/BM

### SIP call repeater operation

Once the AD639SR is connected to the network and registered in the IP-PBX in a group of numbers for repeating incoming calls, the device emits a loud sound (a message or any compatible audio file) and, at the same time, activates a light signal LED or FLASH, if provided.

A second relay can be used for external drives. The cycle ends at the end of the call or for an operator's response, except to resume for a new incoming call.

### Audio ringtone files supplied

Various types of ringtones are included, in any case the user can record a sound of his liking, in the audio format compatible with AD639SR and transfer it to the memory with any web browser (MS Edge, Chrome, Firefox, etc.)

### Multiaccount

AD639SR can be registered on the PBX with **8 different accounts** in order to be inserted in **8 groups of associated telephones**. In this way the system changes and differentiates the ringtone played according to the internal number of the called group.

### Light indicator with multicolor LED

With the AD639SR/LM model with multicolor LED flasher it will be possible to differentiate, in addition to the ringtones, also the different colors and types of flashing of the light signal for each group of extensions called.

### Alert message announcer

AD639SR can also be used simultaneously as a communications announcer to receive audio from a network microphone that will be reproduced on the loudspeaker. The system has 3 priority Multicast channels in reception, one of which is reserved for broadcasting any background music.

The announcements can be generated by a normal SIP telephone equipped with the Multicast function, by the professional Tema console with AD696/CT4 cardioid microphone or by the AD615/S Encoder with AD696/BM microphone base.

The system is compatible with the Audio Management Theme software "ADAM" for launching announcements and/or files.

### Auto volume based on ambient noise

AD639SR constantly monitors the noise present in the environment and automatically adjusts the volume of the ringer to make it audible in case of strong ambient noise and not excessive in case the environment has become quieter.

### AD639SR/LM

With multicolored LED illuminator



#### Programmable colors:

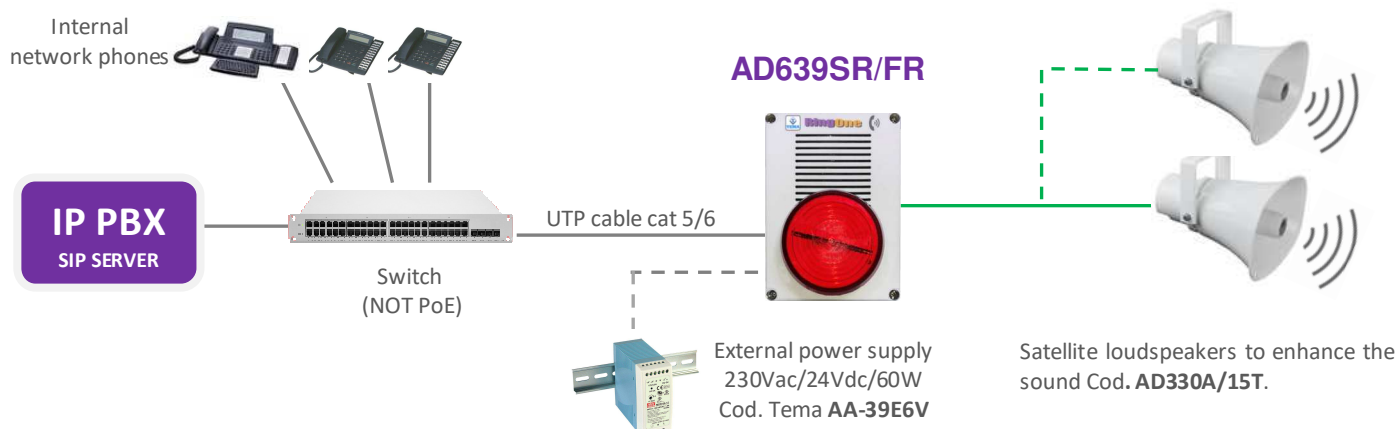
White, green, red, blue, yellow, light blue, purple

#### Programmable flash modes:

continuous, slow flash, fast flash with pause, without pause, Flash mode, Alternating LED mode, Rotating LED mode.

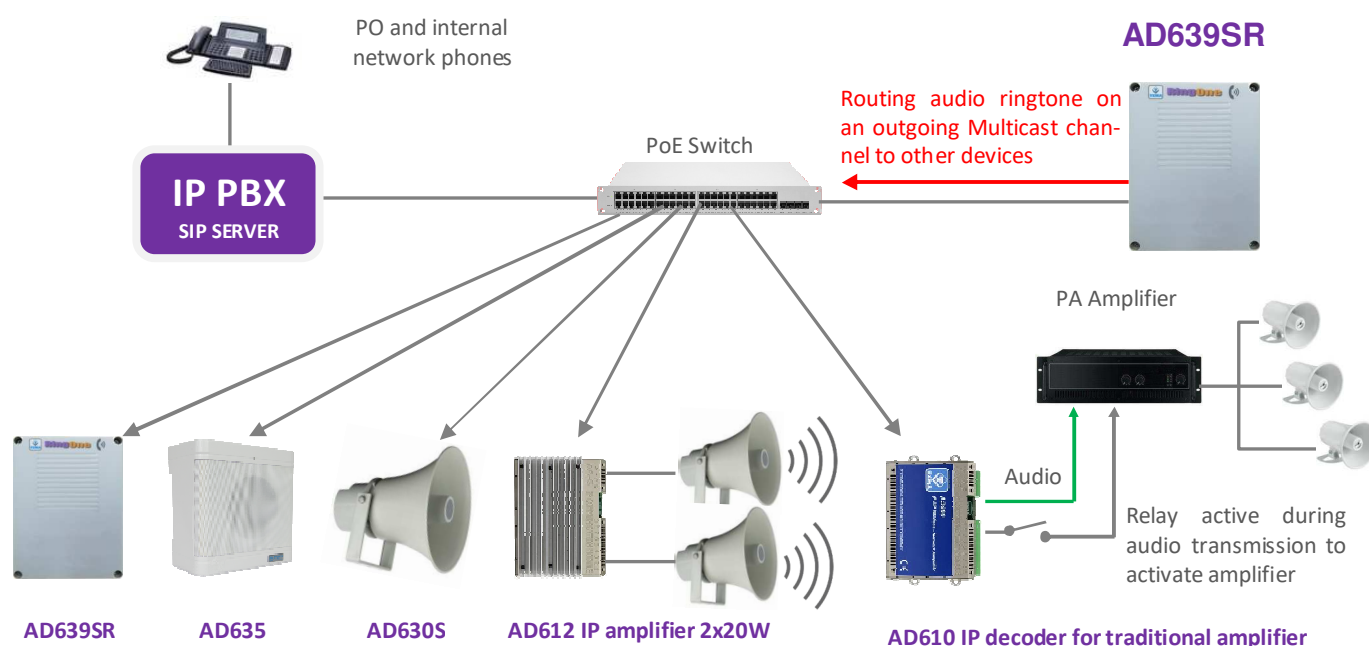


- AD639SR with 230Vac power supply and additional satellite speakers for maximum available sound power for exceptionally noisy environments.



By connecting an external power supply to the AD639SR device, you get maximum power from the built-in speaker. To further increase the sound power, up to 2 additional horn loudspeakers can be connected directly to the system. **This allows you to direct the sound to a "dark" zone of the area to be covered or play the ringing audio in other internal or external zones.** The use of additional loudspeakers also allows for better sound distribution within the areas to be served.

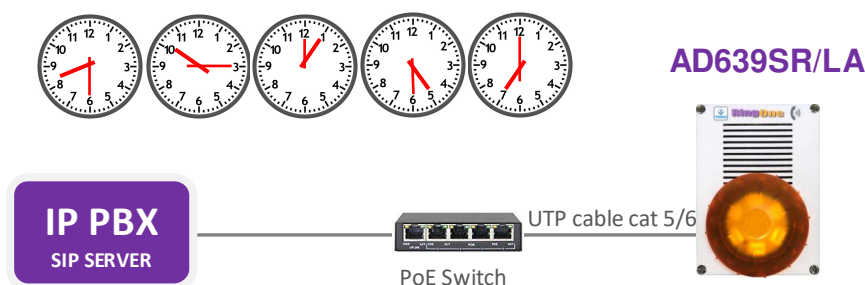
- Audio Routing of the ringtone on a Multicast channel to other devices



This programmable function allows repeating and distributing the ringtone audio of the main AD639SR system, once activated following an incoming call, in a Multicast channel transmitted over the LAN which can be received and broadcast by other AD639SR devices or any Audio IP SIP Tema product. **Using an AD610 decoder the ringtone signal can be coupled to a traditional audio amplifier to be broadcast from the existing loudspeaker network.**

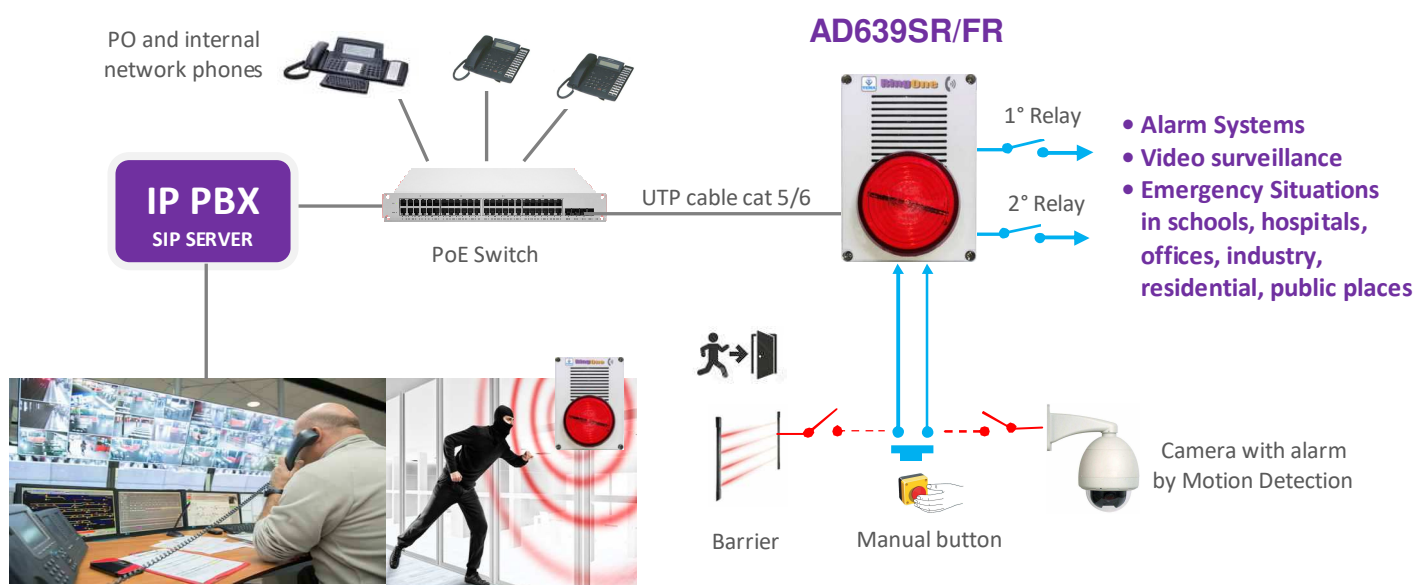


- Diffusion at pre-established times of warning messages or sounds. Daily, weekly, monthly or annual calendar programming.



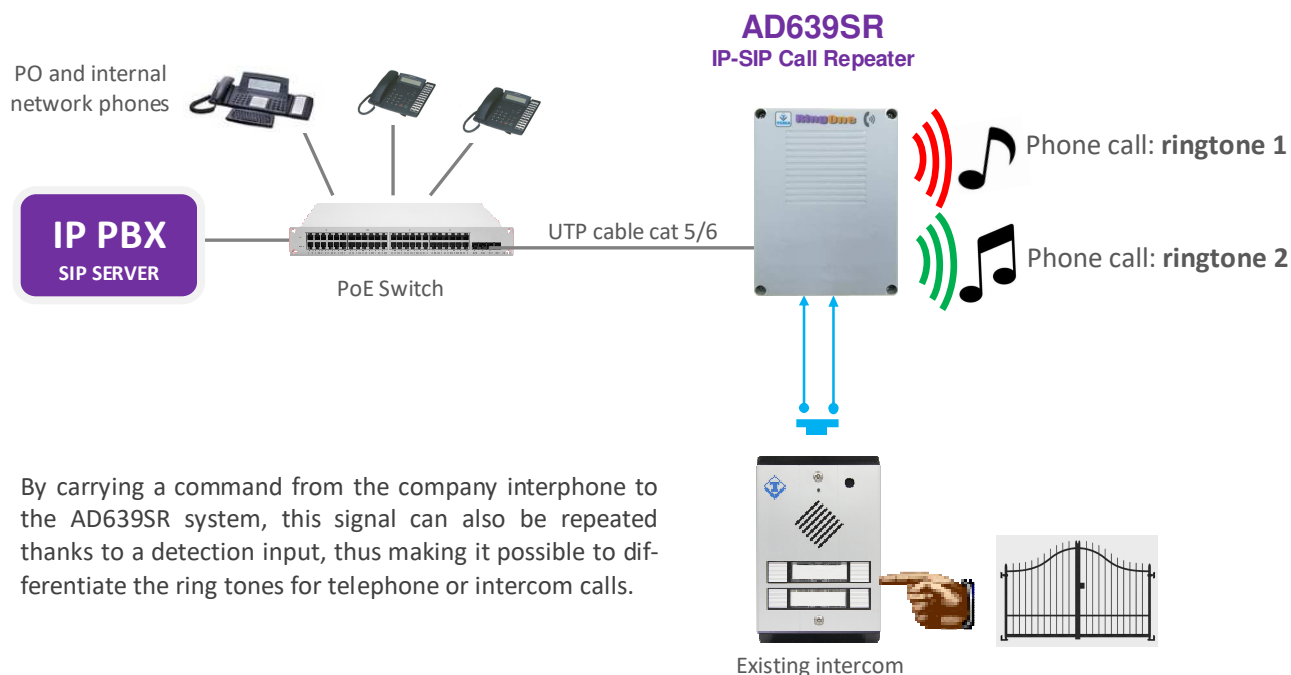
5 different programmable daily/weekly times for the automatic emission of sounds or announcements. It is possible to upload a CSV file for programming with a daily/weekly/monthly/yearly calendar up to 32 daily times. The service is useful in **educational institutions to announce the start and end of lessons and as an announcer of service alerts. The system can also be used in work environments for start/end times and work shifts.**

- Emission of a dissuasion message or sound following an external event with SIP call to the control center with indication of the area of origin.



AD639R can be activated by an alarm contact from a sensor, a camera with motion detection or a simple emergency button. In this case, a message or a dissuasion sound will be emitted locally, after which the system can call a number in P2P (Peer to Peer) and inform an operator of the event with a pre-recorded message. The audio messages can be customized by the user. **The application is useful in alarm and video surveillance systems, information alerts and signaling wherever emergency situations may occur.**

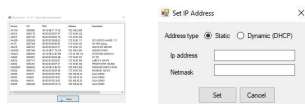
- Repetition of telephone and intercom calls with ringtone differentiation



By carrying a command from the company interphone to the AD639SR system, this signal can also be repeated thanks to a detection input, thus making it possible to differentiate the ring tones for telephone or intercom calls.

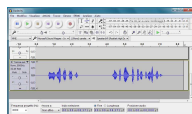
- Available software and Application Program Interface (API)

#### TEMA Device Scan



Free "DeviceScanTema" software for searching all Tema systems on the network, displaying the IP address, MAC address, serial number S/N, device name, description. From this software it is possible to quickly change the IP address and Subnet Mask or set up the system in DHCP. The DeviceScanTema software does not require installation on a PC and can also run from a USB pendrive, the software can be downloaded at the following link: <https://www.tema-ipaudio.com/download-2/>

#### Audio processing software



For the creation of messages and audio clips, we suggest using the free AUDACITY software, freely downloadable from the website: <https://www.audacityteam.org/download/>

**Tema offers the message personalization service with multilingual professional speakers.**

#### API Application program interface:



Various APIs are enabled which can be activated via browser or external programs to activate some of the functions of the AD639SR system such as for example the activation of the 2 internal relays, local playback of internal pre-recorded messages and ringtones, system status.

#### APP PC Windows (Free Demo):



**"ADAM"** Audio Domain & Access Management software for centralized management of all devices on the network. The "Full" version is provided for 30 days, upon expiry it can be purchased or, if not, the basic demo version remains with the "Scan" function and Web Link for viewing all Tema devices on the net: IP addresses, MACs and other parameters. ADAM can be downloaded at the following link: <https://www.tema-ipaudio.com/en/adam-software/>

## • Available models and optionals

**AD639SR**Without  
Flashing**AD639SR/LA**With  
orange LED flashing**AD639SR/FT**With transparent Xenon  
FLASH flashing light**AD639SR/FR**With red Xenon flashing  
light**AD639SR/LM**With RGB multicolor LED  
indicator**AA-39P4**PoE injector 230Vac/  
48Vdc 0,5A.**AA-39E6V**DIN 230Vac/  
24Vdc-2,5° power supply**AD699/L10A**Orange LED  
Flashing  
external mounting**AD699/X10B**Transparent Xenon  
Flashing,  
external mounting**AD699/X20R**Red Xenon Flashing,  
external mounting**AD699/L10M**Indicator with multi-  
color RGB LED,  
external mounting**AD699/RT**Gray horizontal and verti-  
cal adjustable support,  
capacity 5Kg

### *Compatibility with the most common brand of IP-PBX:*

SIEMENS/UNIFY - AVAYA - ALCATEL - PANASONIC - SAMSUNG - NEC  
LG ERICSSON - WILDIX - AASTRA - ASCOM - NITSUKO - SELTA - PHILIPS  
MITEL - YEASTAR - ZYCOO - CISCO - EPYGI ELASTICS - GRANDSTREAM  
SHORETEL - NORTEL - SWYX - XORCOM - INNOVAPHONE - NETHESIS  
3CX - KALLIOPE - BRIA - SISTEMI ASTERISK E SOFTPHONE APP -  
LOXONE DOMOTICS



Download the technical manual  
and all documentation

[https://www.tema-  
ipaudio.com/en/ad639sr/](https://www.tema-ipaudio.com/en/ad639sr/)

## Technical features

LAN, protocol:	TCP/IP Network 10/100BaseTx, SIP 2.0
Protection grade/shock resistance:	IP56/IK08
Power supply:	PoE, Injector PoE or external power supply
PoE:	802.3af class 0 12,95W
External power supply (Opt.):	230Vac/12-24Vdc-1-2A
Security:	Access through password, Activity log
Inputs from external alarm commands:	1
Contact capacity of the 2 internal relays:	max 30Vdc – 1,5A
Container:	Technopolymer Halogen free EN60754-2
Operating temperature:	from -25° to +60°C
Storage temperature:	from -25° to +65°C
Humidity:	up to 90%
Dimensions:	119x159x70mm
Weight:	1,8Kg

Audio amplifier:	40W (Ext.P.S.) Class "D" (10W PoE)
Bandwidth:	350 – 6000Hz
Acoustic pressure (SPL):	100 dB (1KHz/1 meter)
Mess./Ringtone:	8+2 pre-recorded in the internal memory
Signalings:	Active call led
Optional indicators:	Led, Flash Xeno, multicolor Led
Programming:	web interface and password
Technology:	580MHz MIPS CPU
Memory:	128MB Ram + 32MB Storage
Connection:	SIP Server (IP-PBX) and P2P (Peer To Peer)
Installation:	wall mounted, adjustable with accessory (opt.)
Origin:	entirely developed and built in Italy
Warranty:	2 years, possibility of extension (Opt.)
Compatibility:	CE, ROHS

*"IP COMMUNICATION AND SECURITY COMPANY"*



**TEMA TELECOMUNICAZIONI S.r.l.**

Via Costante Girardengo, 1/4 - 20161 Milano MI (Italy) Tel. +39 02 61544.1 Fax +39 02 6152605  
Web: [www.tematlc.it](http://www.tematlc.it) e-mail: [tematlc@tematlc.it](mailto:tematlc@tematlc.it) International: [sales@tematlc.it](mailto:sales@tematlc.it)

